

057840

LARAMIE COUNTY
WYOMING

NORTHEAST CORNER SECTION 11 CHEYENNE BR. & R.

CERTIFIED LAND CORNER RECORDATION, 89 MAY 30 AM 11 27

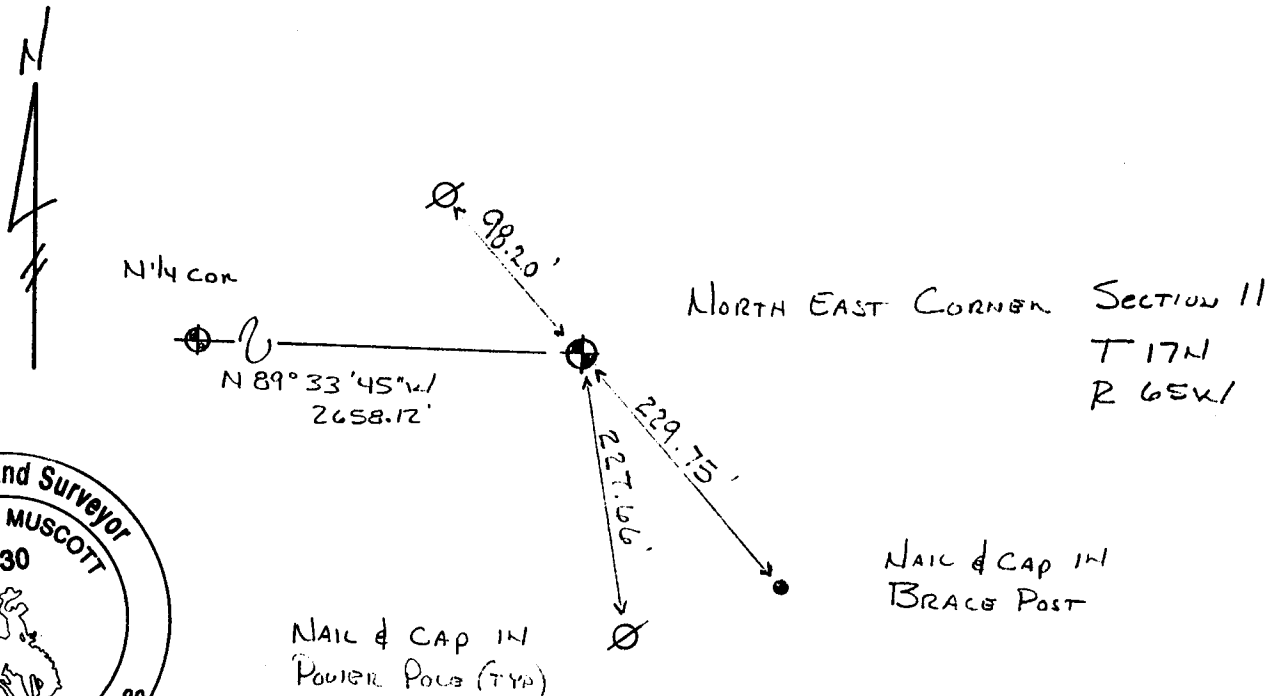
DESCRIPTION OF CORNER EVIDENCE FOUND, AND ORIGINAL RECORD (If known)

THIS CORNER RECORDATION IS FILED TO REPLACE A RECORDATION FILED BY ME ON APRIL 27, 1988 AND MISMARKED AS THE NORTH EAST CORNER SECTION 12 T17N R65W

DESCRIPTION OF MONUMENT AND ACCESSORIES ESTABLISHED TO PERPETUATE THE ORIGINAL LOCATION OF THIS CORNER:

FOUND 1/2" REBAR IN ROCK PILE, ACCEPTED AS THE CORNER

SKETCH, WITH COURSE AND DISTANCE TO ADJACENT CORNER IF DETERMINED IN THIS SURVEY. (May Sketch or Paste Reproduction on Reverse Side.)



I, Wallace C. Muscott certify that I have carefully performed or reviewed the work done on the diagrammed corner as reported on this recordation form and approve the same.

Wallace C. Muscott 3830
Signature of Surveyor Registration No.

STATE OF WYOMING,
Office of Clerk and Recorder,
County of _____

This "corner record" was filed for record on the _____ day of _____, 19____, was noted on the cross-index plat and is assigned page No. _____, in book No. _____

Janet C. Whitehead
County Official

Cross Index No. <u>E-21</u>	T. <u>17N</u>	R. <u>65W</u>	Mer. <u>6th</u>
_____	T. _____	R. _____	Mer. _____
_____	T. _____	R. _____	Mer. _____
_____	T. _____	R. _____	Mer. _____
_____	T. _____	R. _____	Mer. _____
_____	T. _____	R. _____	Mer. _____
_____	T. _____	R. _____	Mer. _____